

Lachlan Riverstone



MENTAL HEALTH
FIRST AID
AUSTRALIA GUIDE

enjoy your journey

Mental Health First Aid in Australia

Table of Contents

1. Introduction
2. Understanding Mental Health in Australia
3. Recognizing Mental Health Crises
4. The ALGEE Action Plan
5. Common Mental Health Conditions in Australia
6. Legal and Ethical Considerations
7. Resources and Support Services
8. Conclusion

1. Introduction

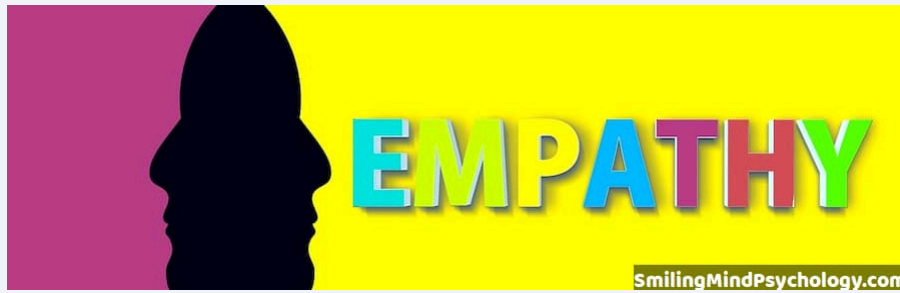
Mental Health First Aid (MHFA) is a vital skill in contemporary Australian society. With approximately one in five Australians experiencing a mental illness in any given year, the ability to provide initial support to those facing mental health challenges is increasingly important.

This ebook aims to provide a comprehensive overview of Mental Health First Aid in the Australian context. It is designed to equip readers with essential knowledge and skills to recognize mental health issues, offer initial support, and guide individuals towards appropriate professional help.

Mental Health First Aid, developed in Australia in 2000 by Betty Kitchener and Professor Tony Jorm, has since become a globally recognized program. It teaches people how to assist someone who is developing a mental health problem, experiencing a worsening of an existing mental health problem, or in a mental health crisis.

By the end of this ebook, readers will have a solid foundation in MHFA principles and practices, tailored to the unique cultural and social landscape of Australia. While this resource provides valuable

information, it's important to note that it does not replace formal MHFA training and certification.



2. Understanding Mental Health in Australia

2.1 The State of Mental Health in Australia

Mental health is a significant public health issue in Australia. According to the Australian Institute of Health and Welfare:

- 45% of Australians aged 16-85 will experience a mental illness at some point in their life.
- The most common mental illnesses are anxiety disorders (affecting 14% of adults annually) and depressive disorders (affecting 6% of adults annually).
- Approximately 4% of Australian adults experience a severe mental illness each year.

2.2 Cultural Factors Influencing Mental Health

Australia's diverse population means that cultural factors play a significant role in mental health:

- Aboriginal and Torres Strait Islander peoples experience higher rates of psychological distress and mental illness compared to non-Indigenous Australians.
- Culturally and Linguistically Diverse (CALD) communities may face unique challenges, including acculturative stress and trauma from refugee experiences.
- LGBTQIA+ individuals have higher rates of mental health issues due to experiences of discrimination and social exclusion.

2.3 The Impact of Environmental Factors

Recent environmental challenges have had a significant impact on mental health in Australia:

- Bushfires, droughts, and floods have led to increased rates of anxiety, depression, and post-traumatic stress disorder in affected communities.
- The COVID-19 pandemic has exacerbated mental health issues, with increased rates of anxiety, depression, and social isolation reported across the country.

2.4 Stigma and Mental Health

Despite progress, stigma remains a significant barrier to seeking help for mental health issues in Australia. Understanding and addressing stigma is crucial for effective mental health first aid.



3. Recognizing Mental Health Crises

3.1 Signs of a Mental Health Crisis

A mental health crisis can manifest in various ways. Common signs include:

- Extreme agitation or anxiety
- Confused thinking or irrational thoughts
- Hallucinations or delusions
- Severe mood swings
- Inability to perform daily tasks
- Isolation from friends and family
- Thoughts of self-harm or suicide

3.2 Specific Crisis Situations

3.2.1 Suicidal Thoughts and Behaviors

Warning signs may include:

- Talking about wanting to die or kill oneself
- Researching suicide methods
- Withdrawing from social contact
- Extreme mood swings
- Increasing alcohol or drug use

3.2.2 Panic Attacks

Symptoms of a panic attack can include:

- Rapid heartbeat
- Shortness of breath
- Chest pain
- Dizziness
- Intense fear or sense of doom

3.2.3 Psychotic Episodes

Signs of a psychotic episode may include:

- Hallucinations (seeing, hearing, or feeling things that aren't there)
- Delusions (fixed, false beliefs)
- Disorganized speech or behavior
- Social withdrawal

3.3 Risk Assessment

Learning to conduct a basic risk assessment is crucial in MHFA. This includes assessing:

- Immediate danger to self or others
- Ability to care for self
- Substance use
- Social support
- Previous mental health history

4. The ALGEE Action Plan

The ALGEE action plan is the core of Mental Health First Aid. Each step is crucial in providing effective support:

4.1 Approach, assess and assist with any crisis

- Approach the person calmly and with respect
- Assess for risk of suicide or harm
- Assist the person to get appropriate help

Techniques:

- Use a calm, reassuring tone
- Ensure your own safety and that of others
- If in doubt about safety, involve emergency services

4.2 Listen and communicate non-judgementally

- Give the person your undivided attention
- Listen without judgment
- Use verbal and non-verbal communication skills

Techniques:

- Use open body language
- Reflect back what you've heard to ensure understanding
- Avoid dismissing the person's feelings or experiences

4.3 Give support and information

- Offer emotional support and understanding
- Provide practical help if needed
- Give factual information about mental health

Techniques:

- Validate the person's feelings
- Offer hope for recovery
- Provide information from reliable sources

4.4 Encourage appropriate professional help

- Suggest seeking help from a mental health professional
- Discuss available options for treatment and support

Options may include:

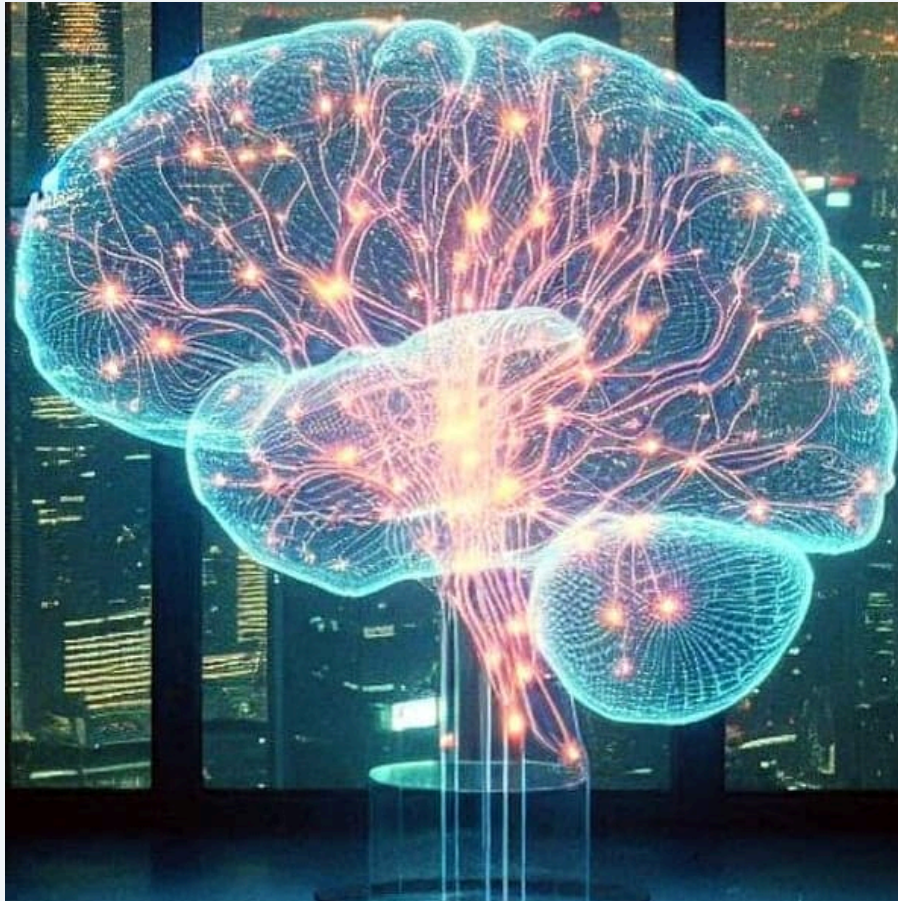
- General Practitioner
- Psychologist or counselor
- Psychiatrist
- Mental health support groups

4.5 Encourage other supports

- Help the person identify supportive friends and family
- Encourage self-help strategies and other support mechanisms

Strategies may include:

- Regular exercise
- Healthy diet
- Stress reduction techniques
- Connecting with community groups



5. Common Mental Health Conditions in Australia

5.1 Depression

- Affects around 1 million Australian adults each year
- Symptoms include persistent low mood, loss of interest in activities, changes in sleep and appetite
- Treatment often involves a combination of therapy and medication

5.2 Anxiety Disorders

- Most common mental health condition in Australia
- Includes generalized anxiety disorder, social anxiety, specific phobias, and panic disorder
- Symptoms vary but often include excessive worry, restlessness, and physical symptoms like rapid heartbeat
- Treatment may involve cognitive-behavioral therapy and sometimes medication

5.3 Substance Use Disorders

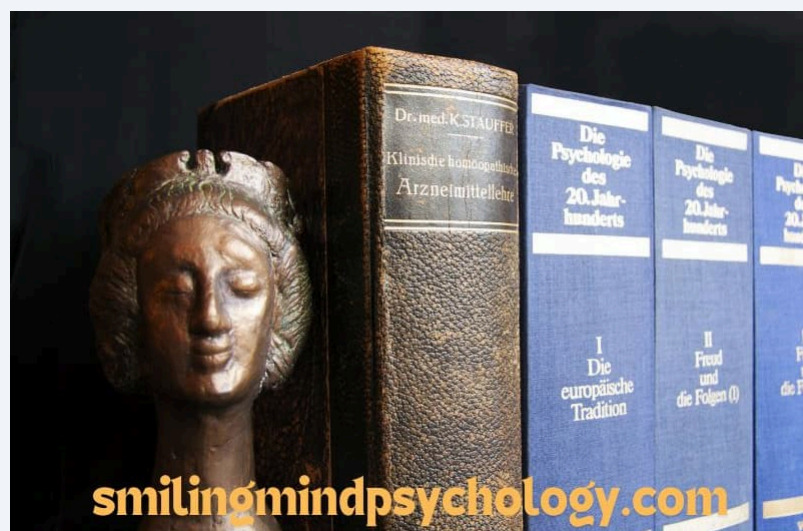
- Affects approximately 5% of Australians
- Involves problematic use of alcohol, illicit drugs, or prescription medications
- Treatment often involves a combination of counseling, support groups, and sometimes medication

5.4 Eating Disorders

- Affect approximately 4% of the Australian population
- Include conditions like anorexia nervosa, bulimia nervosa, and binge eating disorder
- Treatment typically involves a team approach, including psychological, nutritional, and medical interventions

5.5 Psychotic Disorders

- Affect about 0.5% of Australians
- Include conditions like schizophrenia and some forms of bipolar disorder
- Symptoms can include hallucinations, delusions, and disorganized thinking
- Treatment often involves a combination of antipsychotic medication and psychosocial support



6. Legal and Ethical Considerations

6.1 Privacy and Confidentiality

- Mental health information is sensitive and protected by law
- Understand the limits of confidentiality, especially in crisis situations

6.2 Duty of Care

- In some situations, there may be a legal duty to act to prevent harm
- This can override privacy concerns in cases of imminent danger

6.3 Consent and Capacity

- Understanding when and how to involve others in a person's care
- Recognizing when someone may not have the capacity to make decisions about their care

6.4 Anti-discrimination Laws

- Mental health conditions are protected under Australian anti-discrimination laws
- Understanding these protections is crucial for advocating for individuals with mental health conditions

7. Resources and Support Services

7.1 National Helplines

- Lifeline: 13 11 14
- Beyond Blue: 1300 22 4636
- Kids Helpline: 1800 55 1800
- MensLine Australia: 1300 78 99 78

7.2 Online Resources

- Head to Health (headtohealth.gov.au): A government initiative providing links to trusted online and phone supports
- Beyond Blue (beyondblue.org.au): Provides information and support for anxiety, depression, and suicide prevention

- Black Dog Institute (blackdoginstitute.org.au): Offers resources on mood disorders and suicide prevention

7.3 Community Organizations

- Local community health centers
- Aboriginal Medical Services
- Transcultural mental health services

7.4 Professional Help

- How to access mental health plans through GPs
- Finding a psychologist or psychiatrist
- Understanding different types of therapy available in Australia

8. Conclusion

Mental Health First Aid is a crucial skill in today's society, particularly in Australia where mental health challenges are prevalent. By understanding the principles of MHFA, recognizing signs of mental health crises, and knowing how to apply the ALGEE action plan, individuals can play a vital role in supporting those experiencing mental health challenges.

Throughout this ebook, we've covered:

- The current state of mental health in Australia, including cultural and environmental factors
- How to recognize various mental health crises and conduct basic risk assessments
- The ALGEE action plan, providing a structured approach to offering mental health first aid
- Common mental health conditions in Australia and their basic treatments
- Legal and ethical considerations when providing mental health support
- Resources and support services available across the country

Remember, while this ebook provides valuable information, it does not replace formal MHFA training. We encourage readers to seek out certified MHFA courses to further develop these important skills.

By increasing mental health literacy and reducing stigma, we can work together to create a more supportive and understanding community for all Australians. Every individual equipped with MHFA skills contributes to

a society that is more compassionate, informed, and prepared to address mental health challenges.

As you move forward, consider how you can apply these skills in your daily life, whether it's in your personal relationships, workplace, or community. Your knowledge and readiness to provide mental health first aid could make a significant difference in someone's life.

Thank you for taking the time to learn about Mental Health First Aid in Australia. Together, we can foster a culture of mental health awareness and support.

Remember to please check out my website at SmilingMindPsychology.com for a range of helpful information.

